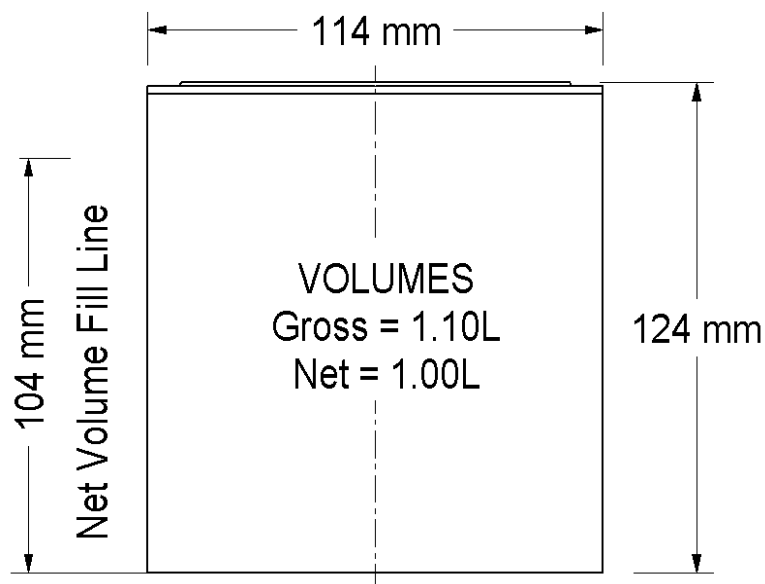




**PLAST-PACK**

**1.0L 115 PT**



## SPECIFICATION

### LID

### HANDLE TYPE

### MATERIAL

### COLOUR

### WEIGHT

### QUANTITY (Empty)

115 U Lid (Gasket Seal available for products with lower viscosity than Emulsion)

No handle

Polypropylene Co-Polymer Food Grade

White – Contact Clear available on request

Container 60g (+/- 5g) Lid 12g (+/- 2g)

Containers 900 per pallet (*plt 1000mm x 1200mm*)

Lids 6000 per pallet (2 boxes)

### STACKING (Empty)

Containers: 5 pallets high (*weight per plt 75 kgs*)

Lids in Boxes: 3 pallets high

### FILLING

(Based on Product Density 1.4,

Air Temperature 20 °C)

600 Per Pallet (*100 per layer x 6 high*)

875mm Maximum Pallet Height

See accompanying page for **Filled Container Specification**

RPC strongly recommend that Stacking Trials be conducted using the appropriate Product under Normal conditions

### FILL TEMPERATURE

Max 70°C (*avoid prolonged exposure over 40 °C & below 0 °C*)

### DECORATION

Off-Set Printing in up to 6 cols

Post Mould Label Option Available

Key Lines Available on Request

*WE RECOMMEND THAT YOU CONSULT OUR DECORATION ADVISORY SERVICE BEFORE BRIEFING YOUR DESIGNER*

### COMPATABILITY

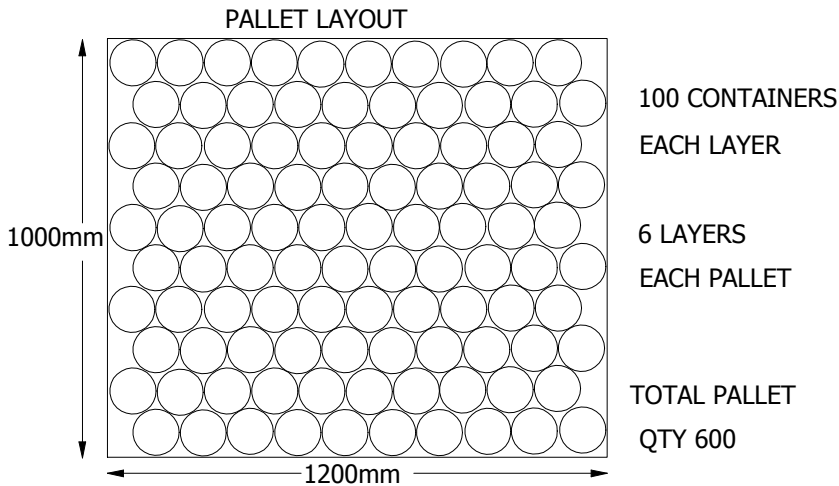
It is the responsibility of our customers to ensure their product is compatible with the container. Trials can be carried out by RPC on request.

**Notes: Details given in this Data Sheet are correct at time of going to press. Further details can be found on the General Information Sheet. However for applications where these are critical please consult our Technical Staff.**

# RPC CONTAINERS LTD

## FILLED CONTAINER

### RECOMMENDED STACKING PATTERN



#### STACKABILITY

All Data given assumes a Product Density of 1.4 and an Air Temperature of 20°C

The Maximum height of Pallets holding filled Paintainers is 2. Use a Layer Pad between each Layer of Paintainers. It is Recommended that Pallets of Filled Paintainers should be Banded, Shrink Wrapped or Stretch Wrapped with a 10mm Spreader Board over the top layer, it is also recommended that the Shrink Wrap or Stretch Wrapping is securely located around the four sides of the Pallet.

#### TEMPERATURE

Filling temperature: Polypropylene 70°C Max.

NB: Stacking performance is affected by temperature therefore do not Lid and Stack until product has cooled.

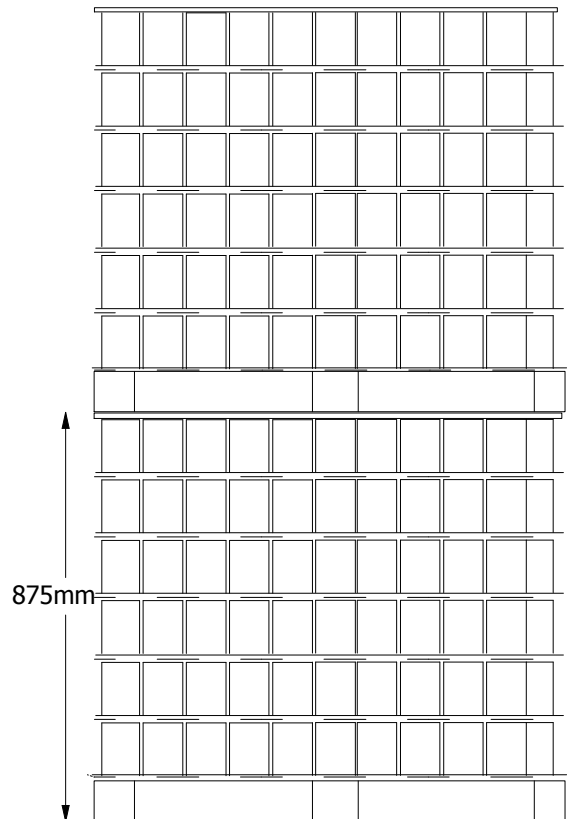
Avoid prolonged exposure over 40°C and below 0°C.

Paintainer Range

**1.0 LITRE 115 PAINTAINER**

DATE. Nov 96.

#### **STATIC LOAD TWO PALLETS HIGH**



N.B. RPC Recommend that Stacking Trials are conducted using the appropriate Product.

Under normal conditions

For all other details related to our products please refer to the RPC Publicity Brochure or our Technical Staff.